



Use Case | Revit

Transforming BIM Design  
Reviews for Global Engineering  
Teams

Streamlining Revit collaboration by eliminating  
fragmented workflows

**ACCELERATE YOUR REVIEWS**



# Customer Overview

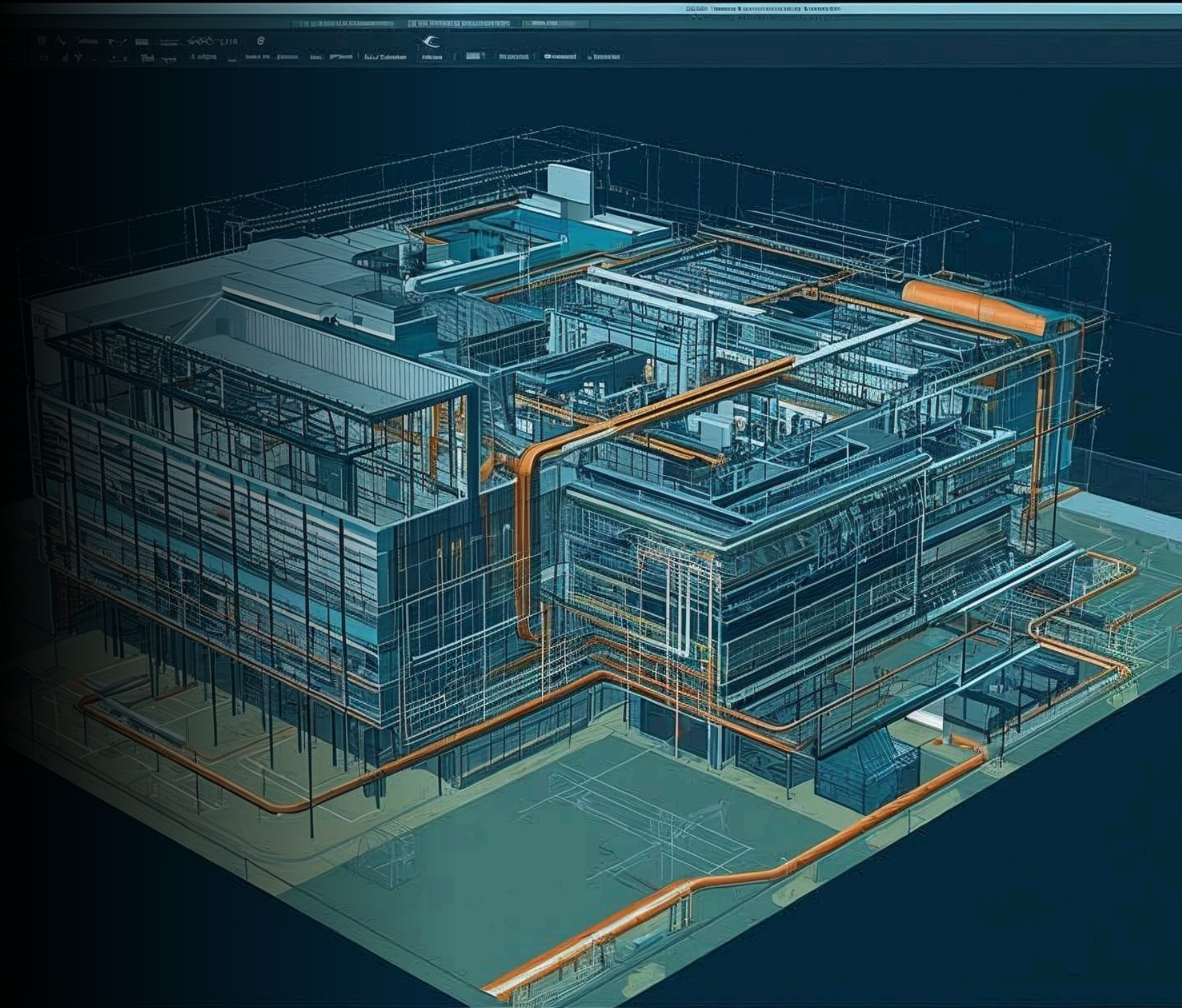
A global owner-operator in the architecture, engineering, and construction (AEC) sector, managing large-scale infrastructure, commercial, and industrial projects across multiple geographies.

The organization utilizes Autodesk Revit for developing and reviewing:

- Architectural models
- Structural models
- MEP (Mechanical, Electrical, Plumbing) systems
- Federated BIM coordination models

With design, engineering, construction, and external consultants collaborating across locations, design reviews involve multiple stakeholders including architects, structural engineers, MEP engineers, BIM coordinators, project managers, and contractors.

As projects grow in complexity and scale, ensuring coordination, compliance, and accuracy in BIM design reviews becomes critical to avoid clashes, delays, and costly rework.



# The Challenge: Fragmented Design Review Workflows

Despite using advanced BIM tools like Revit, engineering review processes remain largely manual and disconnected.

## *Challenges*

- Review feedbacks scattered across emails, PDFs, and offline markups
- No direct linkage between comments and BIM elements (walls, ducts, beams, families)
- Difficulty incorporating multi-disciplinary feedback into coordinated BIM workflows
- Lack of centralized visibility into review progress
- Manual tracking of design changes and revisions

## *Effects*

- Delays in approval cycles impacting project timelines
- Increased rework due to misinterpretation of multidisciplinary feedback
- Inefficient coordination between architectural, structural, and MEP teams
- Limited traceability of design decisions for audits and compliance
- Reduced visibility into overall project and coordination

# From Fragmented Reviews to Structured Collaboration

From **disconnected** reviews to a **centralized, traceable** workflow



# Enabling Structured and Traceable BIM Reviews

Share2Review integrates with Revit to centralize feedback and streamline BIM design reviews

## *Solution*

- Contextual comments directly on BIM elements (Ducts, beams) within Revit models
- Integration within the Revit environment (no context switching)
- Centralized platform for capturing and managing all review comments
- Seamless collaboration across architects, engineers, and external stakeholders
- Complete history of feedback, revisions, and design iterations

## *Impact*

- Faster review cycles across disciplines and project phases
- Significant reduction in rework due to clearer, contextual communication
- Improved coordination between architectural, structural, and MEP teams
- Enhanced visibility into review status and BIM coordination progress
- Reduced project delays and improved delivery timelines

# Reach out to Us

Email

[info@share2review.com](mailto:info@share2review.com)

Website

[www.share2review.com](http://www.share2review.com)



**Neilsoft**